

myPANTONE™ palettes

VERSION 1.5

User Guide

myPANTONE palettes

VERSION 1.5

User Guide



Pantone, Inc.
590 Commerce Boulevard
Carlstadt, New Jersey 07072, U.S.A.
T. 201-935-5500 • F. 201-896-0242

PANTONE Colors may not match PANTONE-identified standards. Consult current PANTONE Color Publications for accurate color. Exported palettes are only viewable in the supported applications specified.

PANTONE®, Goe™ and other Pantone, Inc. trademarks are the property of Pantone, Inc. Adobe, Illustrator, InDesign, and Photoshop are either registered trademarks or trademarks of Adobe Systems Incorporated in the United States and/or other countries. Mac and Mac OS are trademarks of Apple Computer, Inc. Microsoft, Windows, and Windows Vista are either registered trademarks or trademarks of Microsoft Corporation in the United States and/or other countries. QuarkXPress is a trademark of Quark, Inc. and all applicable affiliated companies, Reg. U.S. Pat. & Tm Off., and in many other countries. Corel, Corel DESIGNER and CorelDRAW are trademarks or registered trademarks of Corel Corporation and/or its subsidiaries in Canada, the United States and/or other countries.

All other product names and trademarks are the property of their respective owners. Any omission of such marks from any product is regretted and is not intended as an infringement on such trademarks.

© Pantone, Inc., 2008. All rights reserved. Pantone, Inc. is a wholly-owned subsidiary of X-Rite Incorporated.

Table of Contents

Introduction	3
colorPICKER	4
myPANTONE palettes	6
imagePALETTE builder	7
colorBLENDER	8
myPALETTES	9
myPALETTE reader	12
Preferences	12
Technical Support	14
How to Contact Us	14

Introduction

myPANTONE palettes software

myPANTONE palettes 1.5 software provides a comprehensive set of tools in one centralized location and is compatible with Windows® 2000, Windows XP, Windows Vista® and Mac OS X v10.4 and higher. This easy-to-use interactive color workspace supports system-level color accessibility. Its small widget-like characteristics allow it to coexist onscreen and be used concurrently with open design applications.

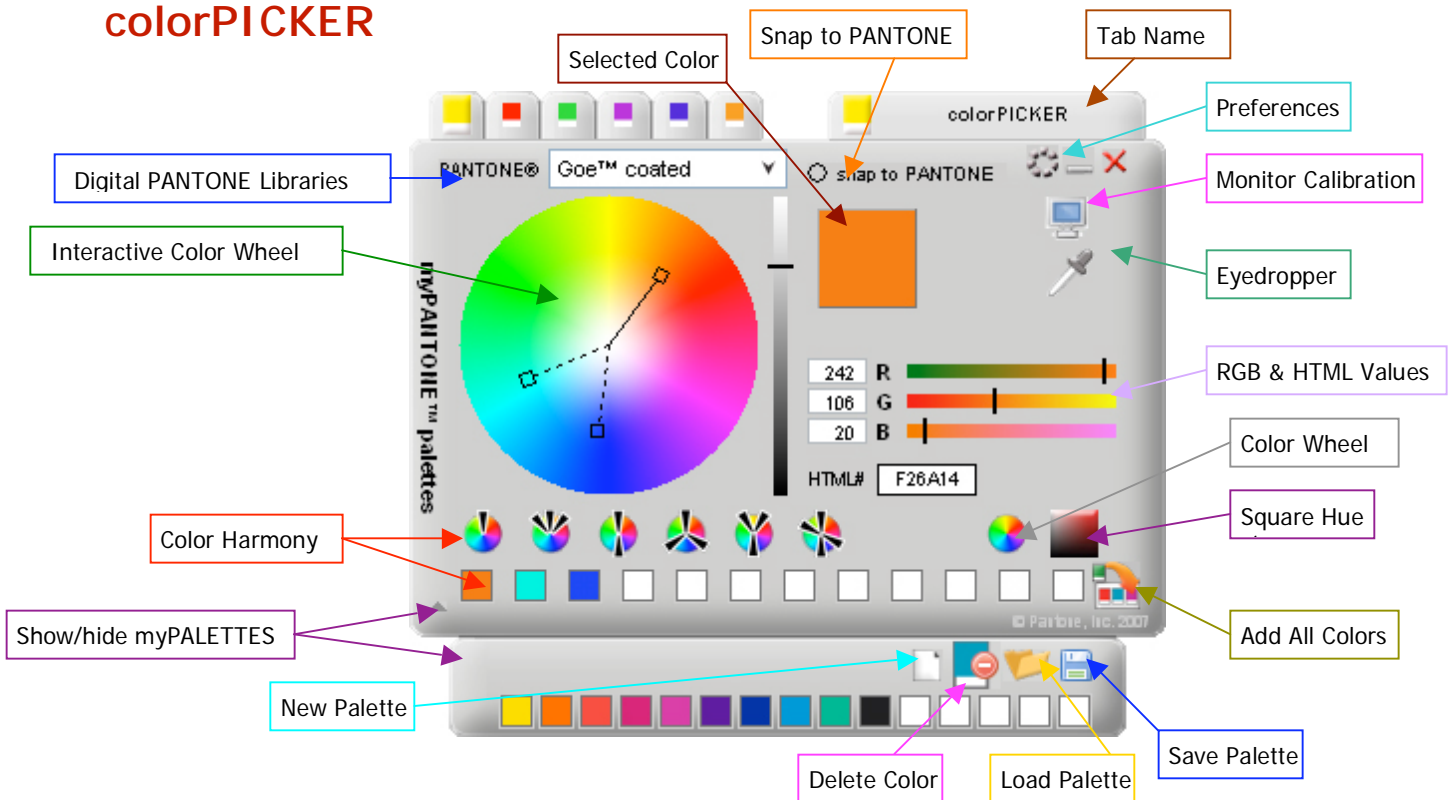
myPANTONE palettes software encourages users to work on a color-calibrated monitor. The software will perform a check to see if the monitor has recently been calibrated. If the user decides to bypass the calibration or if the monitor is not calibrated, an icon indicating that the monitor is not calibrated will be displayed.

On the top left hand corner of the application you will see six different color chip icons, each icon has its own functionality:

- Yellow – [colorPICKER](#) 
- Red – [myPANTONE palettes](#) 
- Green – [imagePALETTE builder](#) 
- Purple – [colorBLENDER](#) 
- Blue – [myPALETTES](#) 
- Orange – [myPALETTE reader](#) 

There are multiple ways to make your color selection, save your working palette, import shared palettes, export palettes and display palettes for presentation. The next few pages will provide further details on the main features and explain how to use this application.

colorPICKER









Color Wheel

A color selector appears when you click in the color wheel. Moving the selector around the color wheel allows you to select the desired color. The vertical slider control to the right of the color wheel changes the colors from their lightest shade to black.

Color Harmonies

You can also display different color harmonies in the wheel by clicking on one of the icons below the large wheel:

- **Monochromatic**  - Displays lighter and darker colors of the same hue
- **Analogous**  - Displays neighboring colors of the selected color
- **Complementary**  - Displays opposite of the selected color
- **Triadic**  - Displays contrasting colors
- **Split Complementary**  - Displays bolder, accent colors
- **Tetradic**  - Displays high contrast colors

Color harmonies are represented by dotted lines in the color wheel. Clicking a color scheme icon a second time removes the dotted color harmony lines from the wheel.

For some color harmonies, the angle between selected color and adjacent color can be configured from the **Preferences** screen.

Square Hue

You can change the color wheel to display a hue of color instead of the color wheel. Changing from wheel to square also changes the function of the vertical slider bar next to the square. You can now change the colors of the hues by using this slider bar.

RGB Sliders

Another way to select a color is to use the sliders for the RGB. This option is a more precise way to select a color if you are trying to reselect a color and know its RGB values. The default RGB used in myPANTONE palettes is sRGB. You may choose Adobe® 1998 RGB from the Preferences menu.

HTML#

This displays or accepts HTML value for the chosen color. This code is frequently used to define colors in Web page designs.

Add All Colors to Palette

This option will add all the colors generated in the color harmonies to the palette. A custom palette can contain up to 15 different colors.

Eyedropper

This tool allows you to choose a color from anywhere on your computer screen.

PANTONE Dropdown Menu

This dropdown menu shows you the PANTONE Digital Libraries that are available in your software. Visit the Pantone Web site (www.mypantone.com) for more information about available libraries.

Snap to PANTONE

You can change the selected color to the nearest PANTONE Color by clicking on the "snap to PANTONE" option at the top of the program. To change back to your original color, click on this option again to uncheck it.

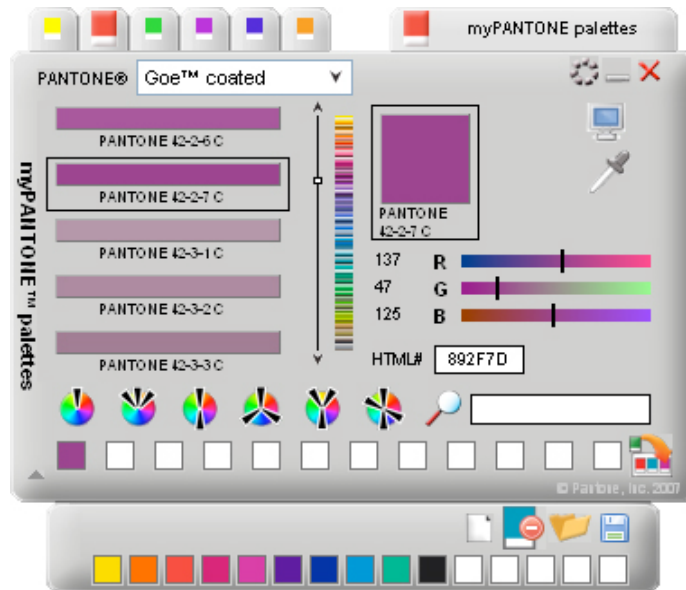
Note: This option is only enabled if PANTONE Libraries are loaded. If there are no PANTONE Libraries installed, colors can not be snapped to their nearest PANTONE Color.

Drag and Drop

Drag and drop any colors you like into your working [myPALETTES area](#).

myPANTONE palettes

Only available if PANTONE Digital Libraries are loaded.



PANTONE Digital Libraries

The dropdown menu shows you which PANTONE Digital Libraries are available for you to work with in the software. Visit the Pantone Web site (www.mypantone.com) for more information about available libraries.

Cross Reference within different libraries

Once a library is selected, you can choose specific PANTONE Colors to add to your palette. Once you have chosen a color, you can scroll through the list of PANTONE Libraries available in the software to cross-reference from one library to another for the selected color.

Color Harmony

You can also display different color harmonies for the selected colors, similar to colorPICKER. However, note that in this screen, the colors harmonies are colors from the PANTONE Library, unlike those in the colorPICKER tab where only the selected color can be snapped to a PANTONE Color.

Search for known PANTONE Colors

The magnifier glass field makes it possible to search for a specific color by name. You can enter a part of a name and the application returns the first occurrence of the name that contains the fragment that you entered.

Drag and Drop

Drag and drop any colors you like into your working myPALETTES area.

imagePALETTE builder



The imagePALETTE builder automatically generates customizable color palettes from any imported image.

Import Image

Click the import image button to load an image that is on your computer. You can import .jpg, .gif, .png, .tiff, .bmp image formats.

Selectors

Once you've loaded an image, the program will load multiple selectors on the image. The selector field in the right-lower corner of the window controls the number of selectors. Click in this field to change the number of selectors. Up to 12 selectors are supported. You can select a selector by clicking on the color square and then moving its cursor to the desired color. If you are working with a darker image, you can click on the color swatches to toggle the lines from black to white.

Randomize Selection

This option will select different colors in the image randomly. You can continue to click on the Randomize icon until the desired selection is reached.

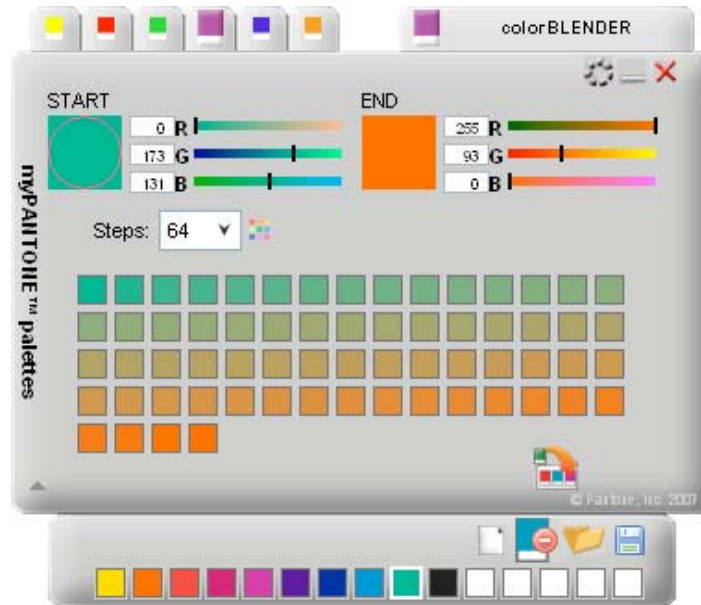
Add All Colors to Palette

This option will add all the selected colors to your working palette.

Drag and Drop

Drag and drop any colors you like into your working myPALETTE area.

colorBLENDER



The colorBLENDER feature allows you to choose a starting color and an ending color from which you can generate different variations between the two colors.

Start Color

This is the color that you will start with when generating your colors. You can adjust the color by using the sliders on the RGB fields. If you know the RGB code of the color you want to start with, you can enter it in the boxes next to the corresponding color.

End Color

This is the color that you will end with when generating your colors. You can adjust the color by using the sliders on the RGB fields. If you know the RGB code of the color you want to end with, you can enter it in the boxes next to the corresponding color.

Selecting Colors from Other Locations

Alternatively, you can double-click either START or END color to “activate” it. Next, you can navigate to the “colorPICKER” or “myPANTONE palettes” window and do a color selection (e.g., from color wheel or square hue). The last color selected is shown in the “activated” color box when you return to the colorBLENDER window.

If you have already selected the colors and placed them into your working palette area, you can double-click either START or END color to activate it. Next, double-click on any color in your working myPALETTE area to select it.

Steps Steps: 4 ▾

Click the down arrow to select the number of steps (colors) you want to see in between the START color and the END color.

Generate

Once you have chosen the START and END colors and set how many steps you want to do, click on the Generate button to generate the colors. The colors that are generated will be displayed.

Add All Colors to Palette

This option will add up to 15 colors generated to the palette.

Drag and Drop

Drag and drop any colors you like into your working myPALETTES area.

myPALETTES

Collapsed View

The collapsed myPALETTES view is available within all tabs except expanded myPALETTES and myPALETTE reader.



Drag and Drop

You can drag and drop colors of your choice into any one of the 15 empty squares.

New Palette

Create a new palette.

Delete

Delete a color, drag the color over the icon and release it.

Load

Open a palette either E-mailed to you or shared with you online.

Save

Save a palette. Your custom palettes are saved in the following location:

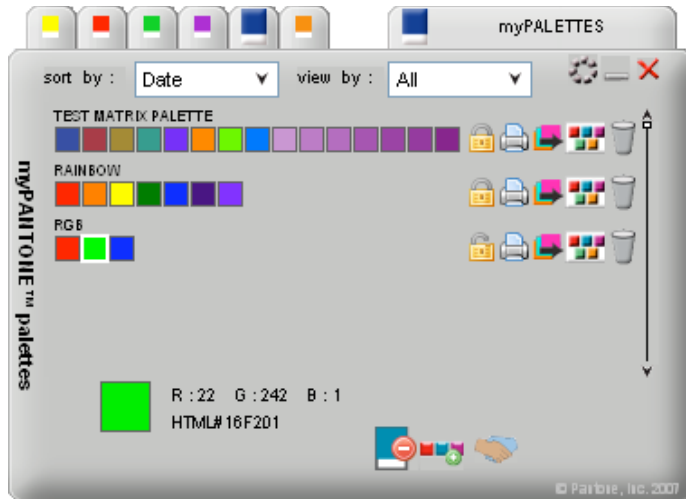
Mac: (User Account) \Documents\Pantone\myPalettes

PC: C:\Documents and Settings\Administrator (User Account) \My Documents\Pantone\myPalettes

myPALETTES

Expanded View

The myPALETTES expanded view tab displays all of the palettes that you created or received from others.



Sort By

This option allows you to sort your palettes by date, name or number.

View By

Choose which palettes you would like to display: All, Mine, or Others.

Lock/Unlock Palette

Locking the palette will ensure that the colors are not changed. If the palette is unlocked, you can double-click on a color to load the colorPICKER.

Delete Palette

This will delete the entire palette from the myPALETTES list.

Delete Color

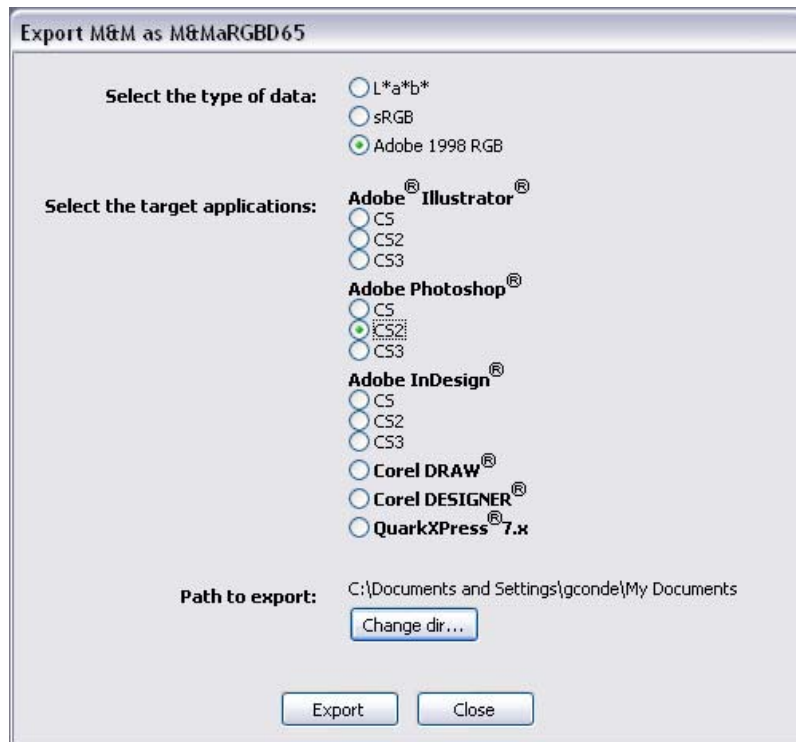
This option will delete a selected swatch from the palette.

Print Palette

Printing the palette will allow printing of the selected palette to a printer of your choice. The output will resemble a PANTONE palette card that can be used to communicate color.

Export Palette

This allows exporting of palettes to application specific palette file formats. See target application manual for more information on how to use these palettes.



View Palette in [myPALETTE reader](#)

You can view the palette in the myPALETTE reader. This will display the swatches larger for better viewing. You can also apply names and notes to a specific color.

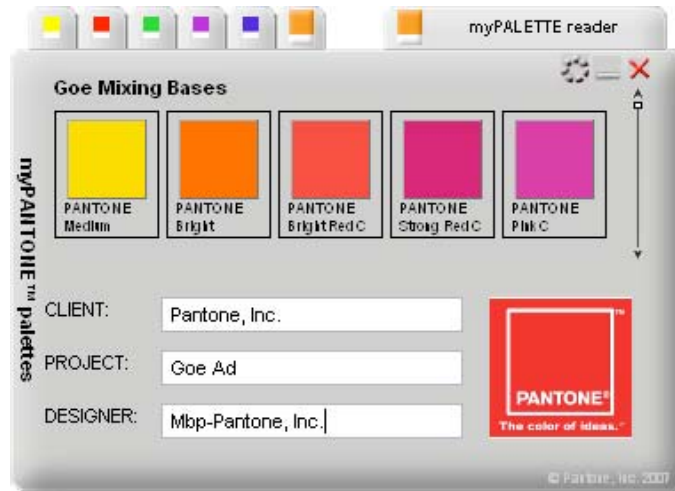
Add New Palette

You can add a new palette to your myPALETTES list.

myPANTONE online

Visit the PANTONE Web site by clicking on this icon.

myPALETTE reader



You can view the palettes created in the myPALETTE reader. This allows you to see a larger swatch of the color.

Double-click on a color in the palette to see more information about the color. For example, you can see the RGB values, the HTML hex code, and you can also apply a name and notes to the color.

If you are working on palettes for a client, you apply a client name, project name and designer name to the palette.

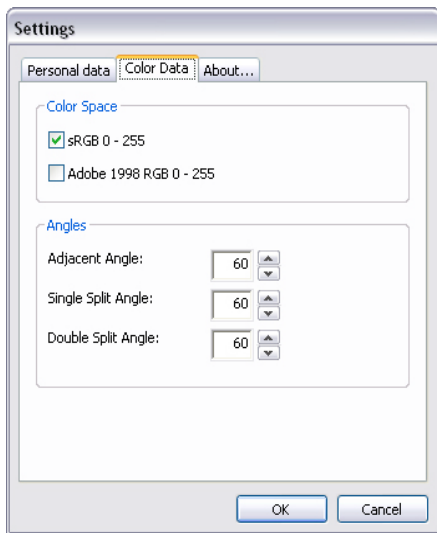
Preferences



Personal Data Tab

This tab allows you to enter in your personal information: Phone Number, E-mail and Address. You can also upload an image for your company logo. The company logo will be visible on [myPALETTE reader](#) tab.

Note: User name and Company name are used to personalize the application and must be entered by the user during the installation process. User that have two or more computers must use care to enter EXACTLY the same information on multiple computers or they will not be able to work on their saved palettes on both machines!



Color Data Tab

Allows you to manage the color space and the angles for each of the different variations of color wheels.

Color Space

sRGB – The sRGB setting is the standard Red-Green-Blue color space used on monitors, printers and the Internet.

Adobe 1998 RGB – The Adobe 1998 RGB is an RGB color space developed by Adobe, Inc. It was designed to encompass most of the colors achievable on [CMYK color printers](#) by using [RGB primary colors](#) on a device such as the [computer display](#). The Adobe RGB [color space](#) encompasses roughly 50% of the visible colors specified by the [Lab color space](#), improving upon the [gamut](#) of the [sRGB color space](#) primarily in cyan greens.

Angles

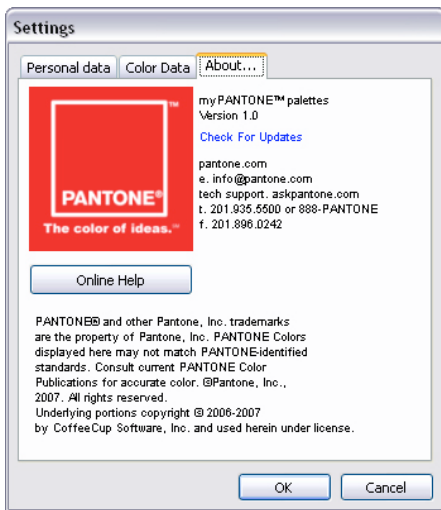
Adjacent Angle – This option adjusts the angle on adjacent color wheel. You can increase or decrease the settings as you desire.

Single Split Angle – This option adjusts the single split angle on the color wheel. You can increase or decrease the settings as you desire.

Double Split Angle – This option adjusts the double split angle on the color wheel. You can increase or decrease the settings as you desire.

About Tab

Provides information about this program, a “Check For Updates” button and a link to the online help page from Pantone.



Technical Support

Pantone is committed to offering you immediate and polite technical support. Technical support is provided at no charge to registered users of our products. Please be sure to provide a concise description of your problem including your system specifics.

You can reach Pantone Technical Support several ways:

Online: <http://www.askpantone.com>

Telephone: 201.935.5500

Mon. – Fri. 8:00 a.m. to 6:00 p.m., Eastern Time

Fax: 201.896.0242

Please remember to include your telephone, fax number and/or E-mail address.

How to Contact Us

To reach our Customer Service Department, please call 866-726-8663 (866-PANTONE). For more information on other PANTONE Products, please visit our Web site at www.pantone.com.

NORTH AMERICA

Pantone, Inc.
590 Commerce Boulevard
Carlstadt, NJ 07072-3098 U.S.A.
Telephone: 201-935-5500
Fax: 201-896-0242
E-mail: corpnj@pantone.com

EUROPE, MIDDLE EAST AND AFRICA

Pantone Europe GmbH
Wilhelmsplatz 11
D-70182, Stuttgart
Germany
Tel: (49) 711 664 75990
Fax: (49) 711 664 75999
E-mail: info@pantone.de

ASIA PACIFIC

Pantone Asia, Inc.
Room 1701, 17/F
No. 3 Lockhart Road
Wanchai, Hong Kong S.A.R.
Telephone: (852) 2724 8822
Fax: (852) 2724 8800
E-mail: sales@pantone.hk

JAPAN

Pantone Japan Co., Ltd.
3F, Shirokane TNK Building
1-29-4, Shirokane, Minato-Ku
Tokyo 108-0072, Japan
Telephone: (81) 3 5789 9466
Fax: (81) 3 3449 9244
E-mail: infojapan@pantone.com